

How to Install ClamWin

About Computer Viruses

Computer Viruses are small programs which run on a computer without the owner's consent and may have the ability to damage the software of the computer they run on. The damage a virus may cause can range from sending an embarrassing e-mail to all the contacts in an Address Book, to deleting the operating system installed on a computer.

Computer viruses are generally spread by running infected downloaded programs, or through security vulnerabilities in the operating system which allow a virus to remotely install over the network.

It is important a computer is kept both up to date with security updates (for Windows computers visit <http://windowsupdate.microsoft.com>) and to have a virus scanner installed.

About ClamWin

ClamWin is a free antivirus scanning program based off the open source ClamAV virus scanning engine. ClamWin provides basic antivirus protection, but lacks many of the features commonly found in commercial antivirus products.

ClamWin can not:

- Scan files as they are accessed (on-demand or on-access scanning).
- Disinfect files.

- Automatically update the virus scanner (but it can update the virus definition files).

Because ClamWin does not scan files as they are accessed it is very important that all files are manually scanned before they are opened (See Manually Scanning a Directory or File).

Most, if not all, commercial antivirus programs will automatically scan files as they are accessed, and provide a more complete level of protection.

Installing ClamWin

1. Download the ClamWin Software by accessing the web site <http://www.clamwin.net>.
2. Click the Download link on the ClamWin Main Page (see Figure 1).

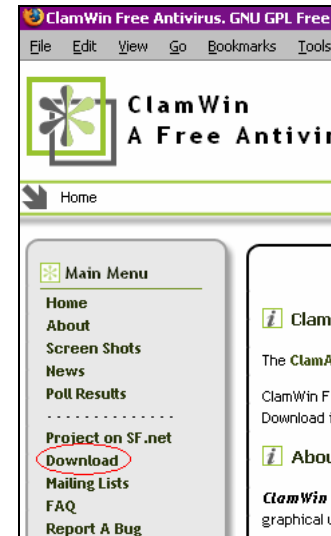


Figure 1 - ClamWin Main Page

How to Install ClamWin

3. Click the "Click Here to Download Link" in the ClamWin Download Sub Page (see Figure 2).

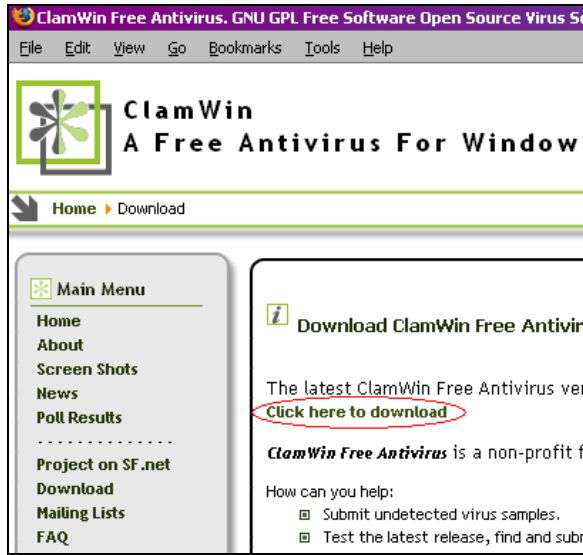



Figure 2 - ClamWin Download Sub Page

4. Choose a mirror to download ClamWin from and click the  icon. Usually, the first mirror listed will work.
5. The page will reload and after a short delay, the download will begin.
 - a. If an error is encountered while trying to download from a mirror, select another one from the list.
6. Download the program, noting both the name of the file downloaded, and where it is being downloaded to.

7. Run the downloaded program file. It varies for each version of ClamWin, but for version 0.85.1 the file name was clamwin-0.85.1-setup.exe.
8. Click the Next button.
9. Read the license agreement, click "I accept the agreement," and click the Next button.
10. When prompted "Who should be allowed to use the software," verify "Anyone who uses this computer (all users)," and click the Next button.
11. Click the Next button.
12. Click the Next button.
13. Click the Next button.
14. Click the Next button.
15. Click the Install button.
16. Wait while the product is installed.
17. When prompted if you would like to restart now select "Yes, restart the computer now," and click the Finish button.

Reinstalling ClamWin

1. Begin with steps 1 thru 7 of Installing ClamWin, but when prompted with a small dialog box (see Figure 3) which prompts "Setup has detected a previous version," Click the Yes button.
2. Continue following steps 8 thru 17 of Installing ClamWin.

How to Install ClamWin

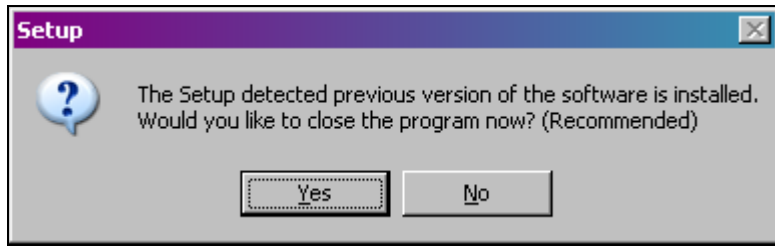


Figure 3 - Previous Version Detected Dialog

Performing a System Scan with ClamWin

1. Click Start→All Programs→ClamWin Antivirus→Virus Scanner.
2. The program will load and display the drives on the system (see Figure 4).

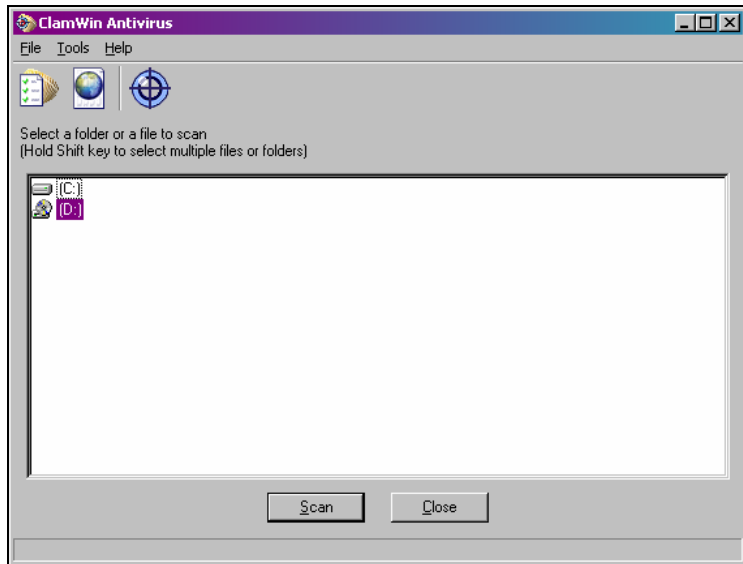



Figure 4 - ClamWin Main Window

3. To scan all hard drives, hold the shift key and single click on all the drives with an  icon.

4. Click the Scan button and wait while the scan is performed. A system scan can take 10 to 30 minutes.
5. When the scan is complete a report will be displayed. A report when no viruses are found will resemble Figure 5.

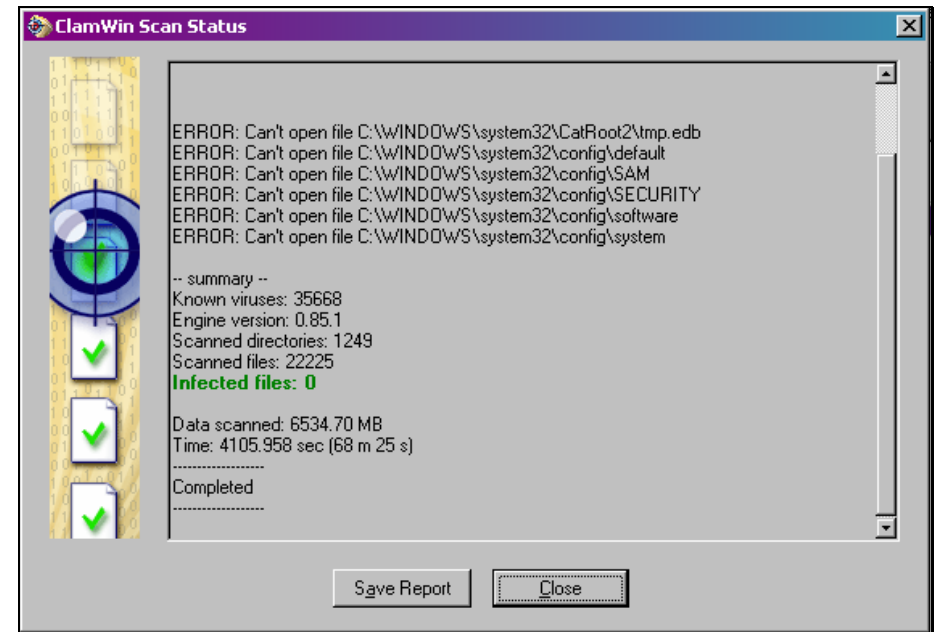


Figure 5 - No Virus Found Report

6. A report when viruses are found will resemble Figure 6.

How to Install ClamWin

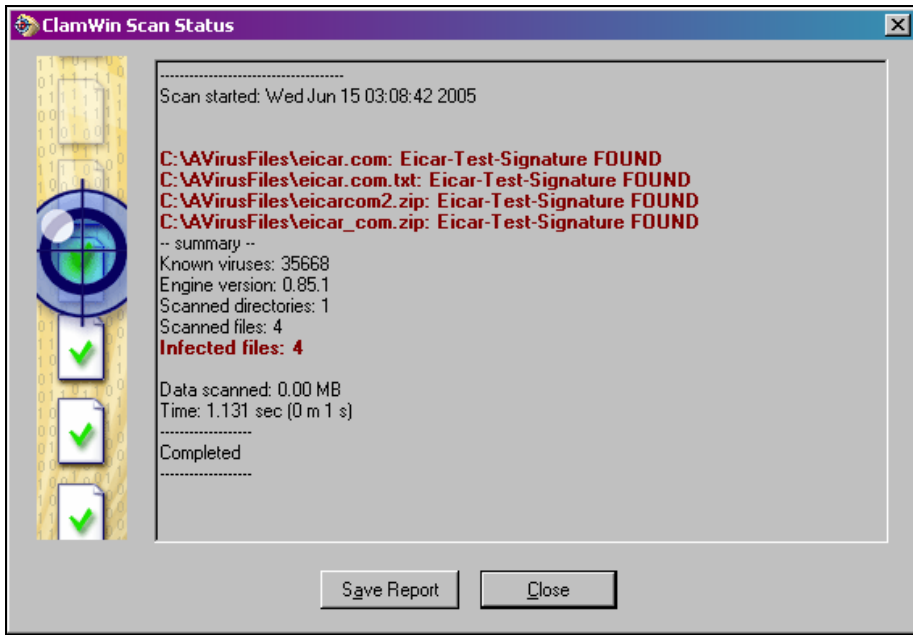


Figure 6 - Virus Found Report

7. Remember that ClamWin will not scan files as they are loaded into memory and that ClamWin does not disinfect files. Infected files will need to be deleted.

Manually Scanning a Directory or File

1. While ClamWin **will not** automatically scan a file for viruses when it is opened, or double clicked, a file or directory may be right-clicked within Windows Explorer (see) and the "Scan for Viruses with ClamWin" option selected.

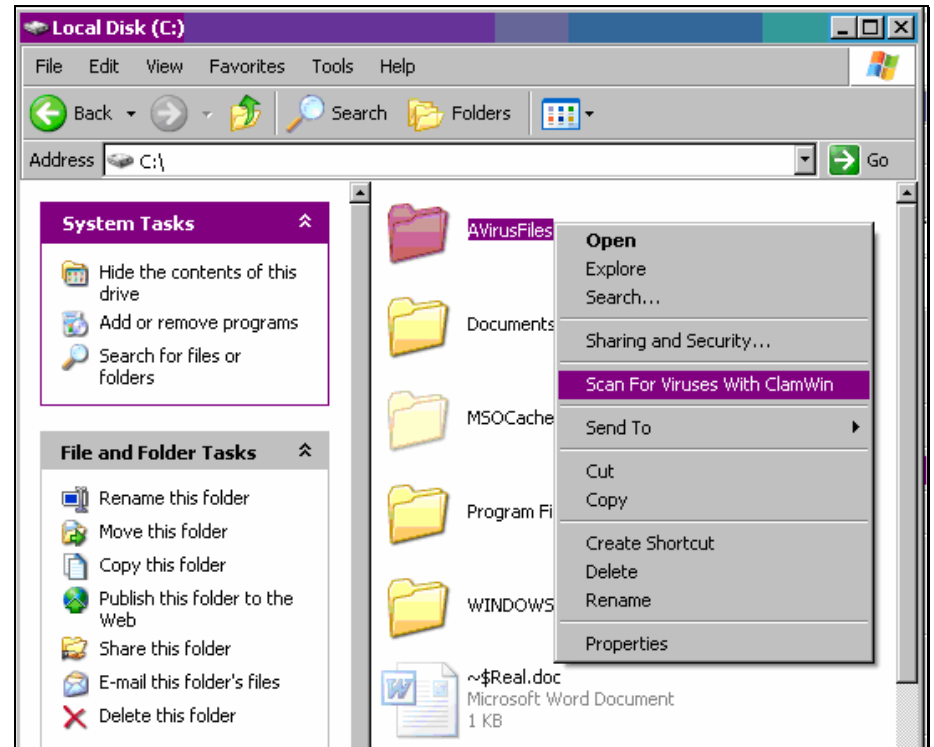


Figure 7 - Scan for Viruses Option in Windows Explorer

2. The file or directory will be scanned for viruses and a report like those shown in Figure 5 and Figure 6 generated.
3. If a file is infected with a virus the recommended action is to delete the infected file. ClamWin can not scan or disinfect files.

How to Install ClamWin

Frequently Asked Questions

1. When I'm updating ClamWin the status window (see Figure 8) says "WARNING: Your ClamAV installation is OUTDATED!" What should I do?

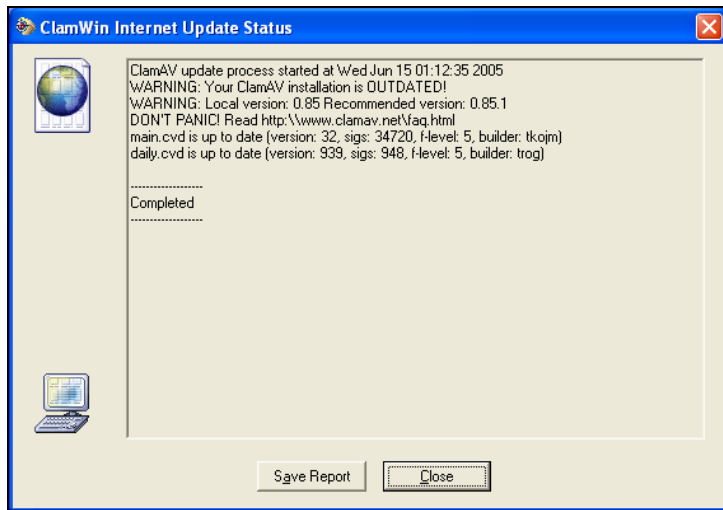


Figure 8 - ClamWin Internet Update Status Dialog

Keeping the virus definition files (the data files that list the signatures for various viruses) up to date isn't enough to keep an up to date virus solution, you also need to update the virus scanning software (the software that reads the data files) up to date.

This warning is reported whenever a new version of the ClamWin virus scanning software is released. In order to get rid of the warning, reinstall the ClamWin software.

References

- ClamWin Download Page <http://www.clamwin.net/index.php?option=content&task=view&id=40&Itemid=25>
- ClamWin FAQ Page < http://sourceforge.net/docman/display_doc.php?docid=22588&group_id=105508>
- ClamWin Project Page <http://www.clamwin.net/>
- ClamAV Project Page <http://www.clamav.net/>